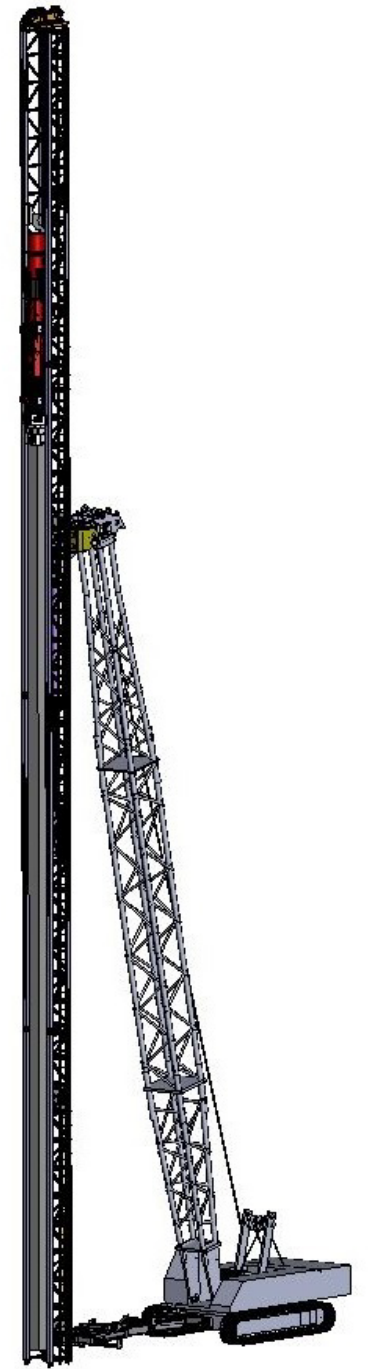


APE VERTICAL TRAVEL ROTATING PILEDIVING LEADER SYSTEM



Helping to Build Americas Foundation
One Pile at a Time



About American Piledriving Equipment Inc.

American Piledriving Equipment Inc. has a unique way of doing business in the deep foundation construction industry. We devise, manufacture and load our own products. We don't rely on distributors; we rent and sell directly to the contractor. We get our equipment to the job site and we set it up. We get our people in the field where they can help and learn. APE is the leader in piledriving equipment and as the leader in the world of foundation equipment we lead the way with our innovative technology.

We here at APE pride ourselves on three major levels that best assists our customers on the job level.

- 1) To provide you, the foundation contractor, with the best foundation equipment available.
- 2) We understand the sense of urgency needed when the equipment is down and to get it up and running.
- 3) Education of the equipment for the boots on the ground crew to understand the equipment with comprehensive on-site training and periodic maintenance scheduling.

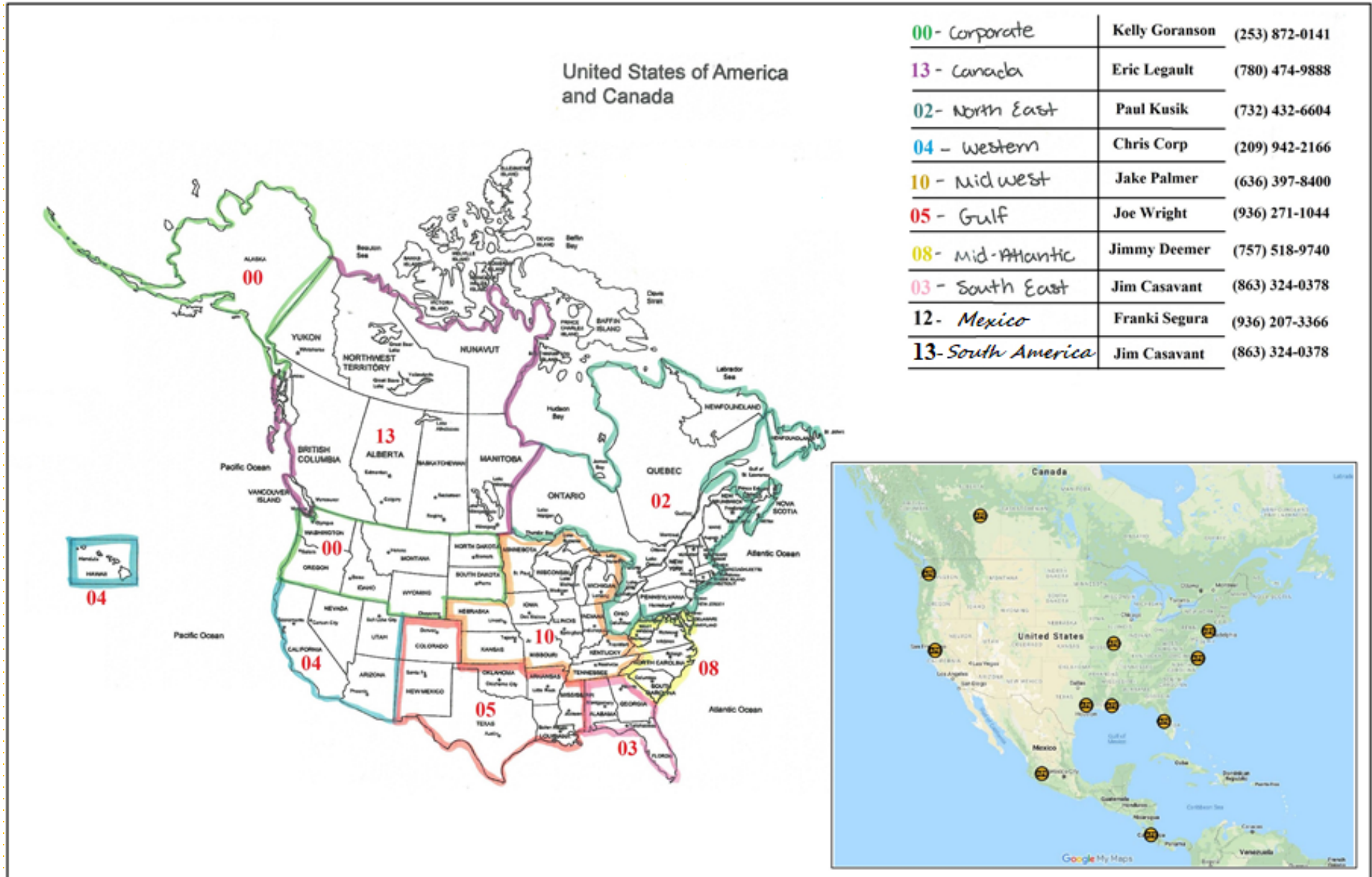
Each of our strategically placed facilities has trained personnel in all aspects of our equipment line-up.

APE is committed to providing outstanding products and service. Being on the job site is crucial to upholding this commitment. We learn firsthand what problems need to be addressed for a particular job before going to the engineering table to solve them. Since our machining and fabrication facilities are in-house, we have the flexibility to respond to job situations almost instantly. Transforming a good idea into a job site reality is our specialty.

From design to production to installation, APE professionals are involved.

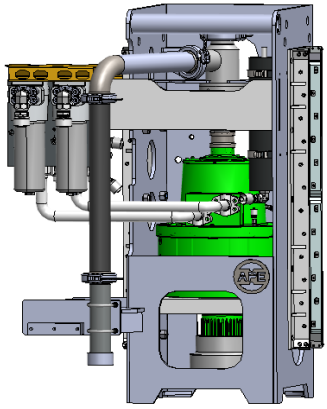
This is the key to APE's successful research and development program, making us the industry leader in patents issued worldwide and giving to you, our customer, the very best foundation equipment available in the industry.

APE is strategically located at key point locations around the US to supply the service you need when you need it.

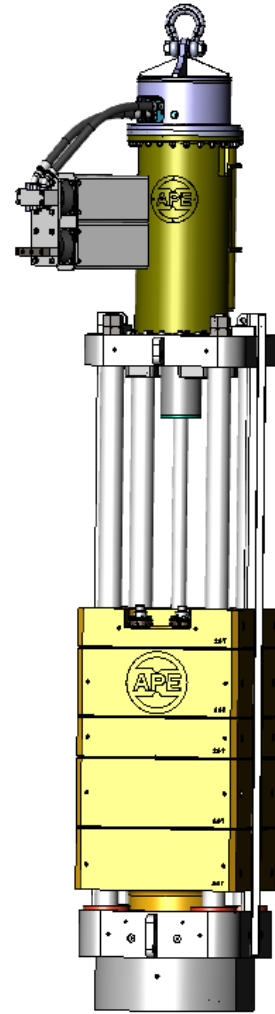


00 - Corporate	Kelly Goranson	(253) 872-0141
13 - Canada	Eric Legault	(780) 474-9888
02 - North East	Paul Kusik	(732) 432-6604
04 - Western	Chris Corp	(209) 942-2166
10 - Midwest	Jake Palmer	(636) 397-8400
05 - Gulf	Joe Wright	(936) 271-1044
08 - Mid-Atlantic	Jimmy Deemer	(757) 518-9740
03 - South East	Jim Casavant	(863) 324-0378
12 - Mexico	Franki Segura	(936) 207-3366
13 - South America	Jim Casavant	(863) 324-0378

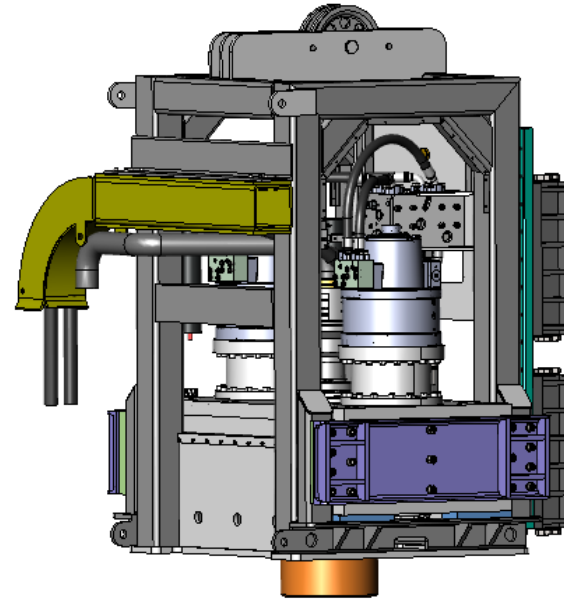
**APE Leader systems are designed for all types of foundation tooling.
Below are a few examples.**



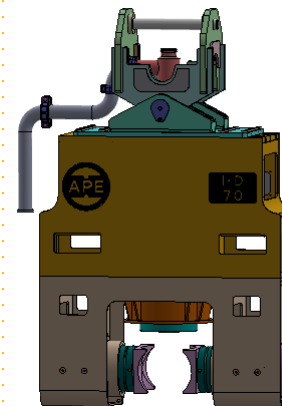
Top Drive Auger



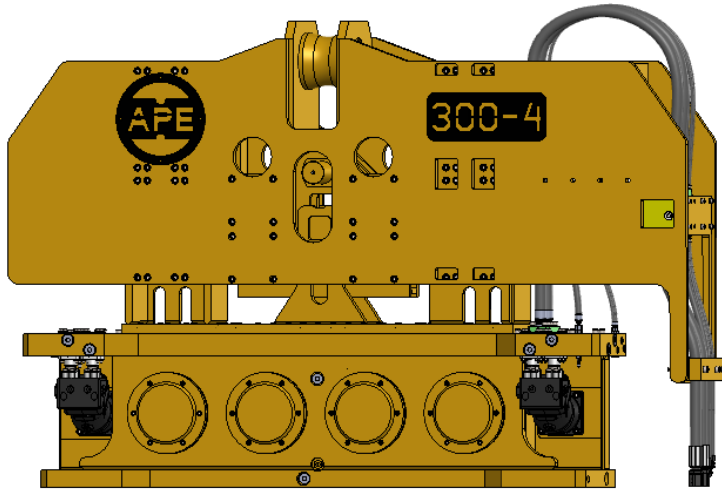
Hydraulic Impact Hammers



**Hi-Torque Displacement
Rotary Drills**



APE Helical Drivers



APE Vibros



APE Diesel Hammer



Examples of Fixed Lead Configurations including various types of Fixed Leader System



APE has been supplying the industry with leader systems for many years. Our engineers, combined with boots on the ground field service experience, has enabled us to customize leader systems to fit various applications of leader system requirements from standard swing leads to sophisticated, multi functional applications such as this Fixed, Sliding, Rotating, Hydraulically driven Vertical Travel leader application for your review.



3-Axis (VTL) Rotating Boom Point Connector

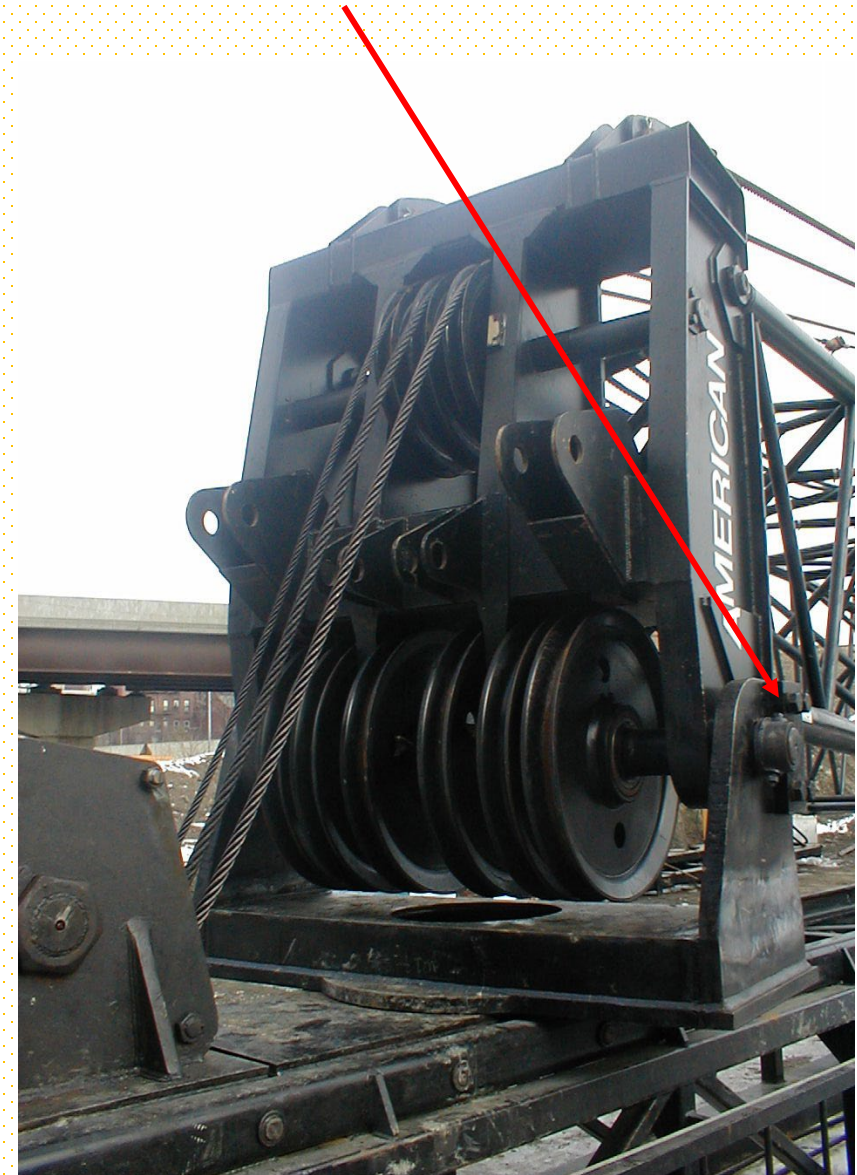
Vertical Travel ST100 Leader (Front Riding)



Fixed Leader System with front riding Vibro

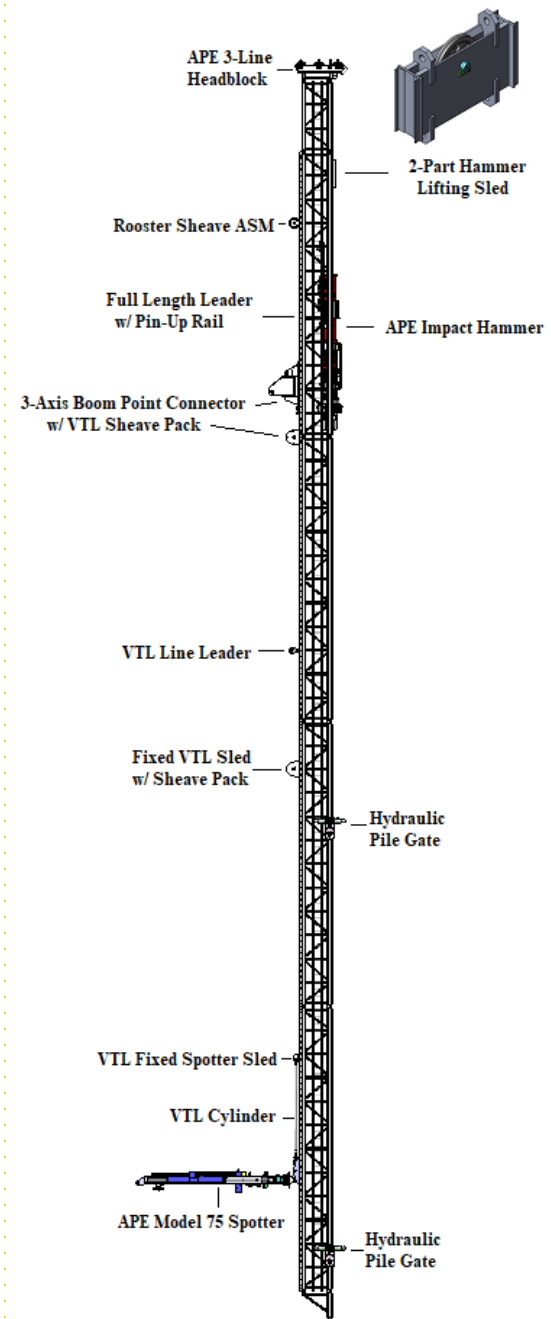


APE prefers “Walk-In Style” Boom Point Connectors which enables the contractor to easily walk the crane boom into the connector.

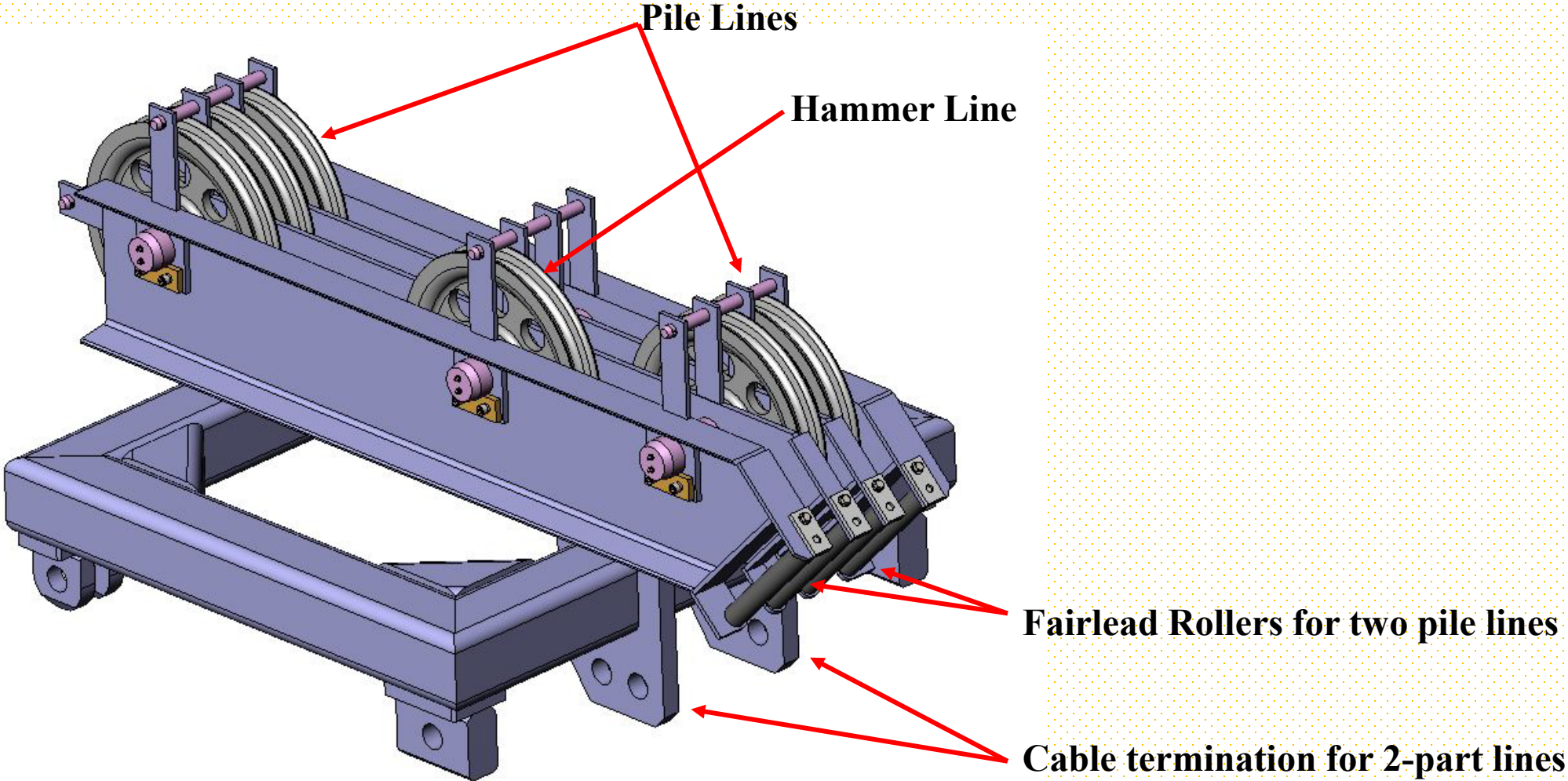


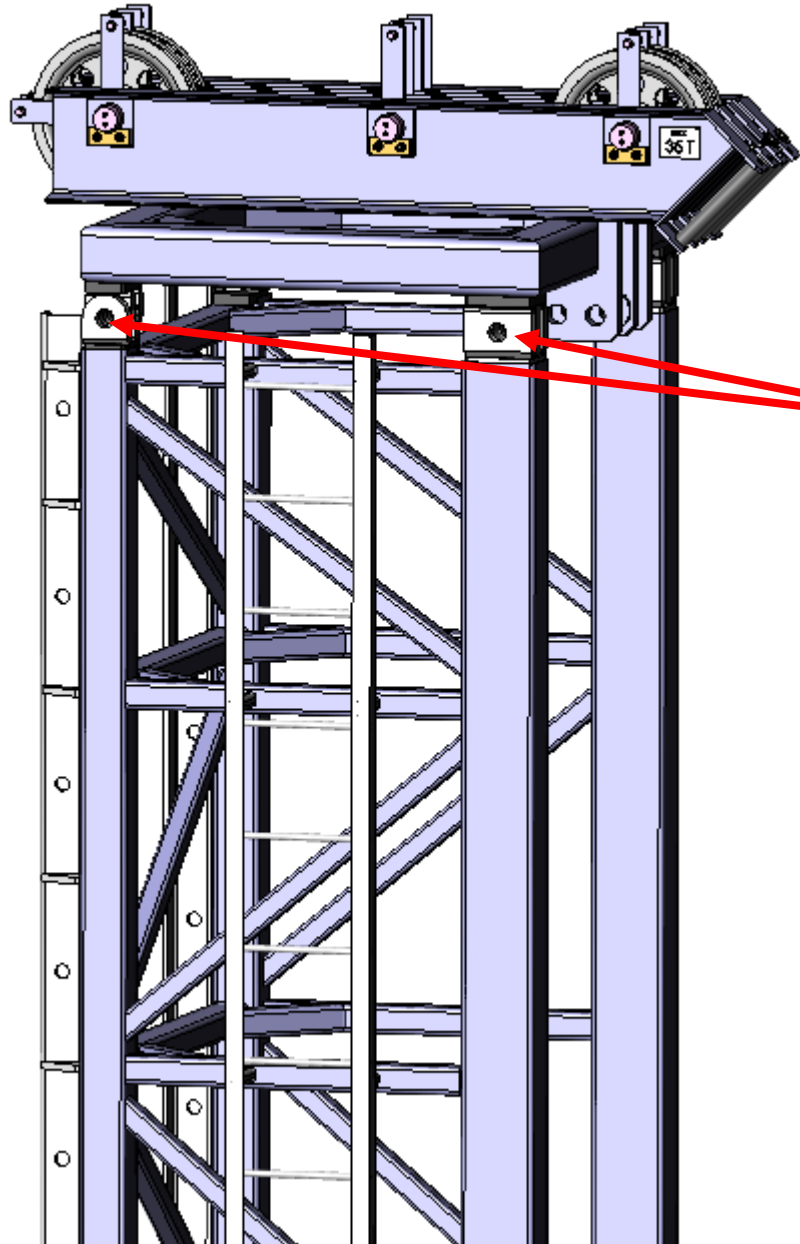
Components for a typical Vertical Travel Leader system.

APE VTL Component Example



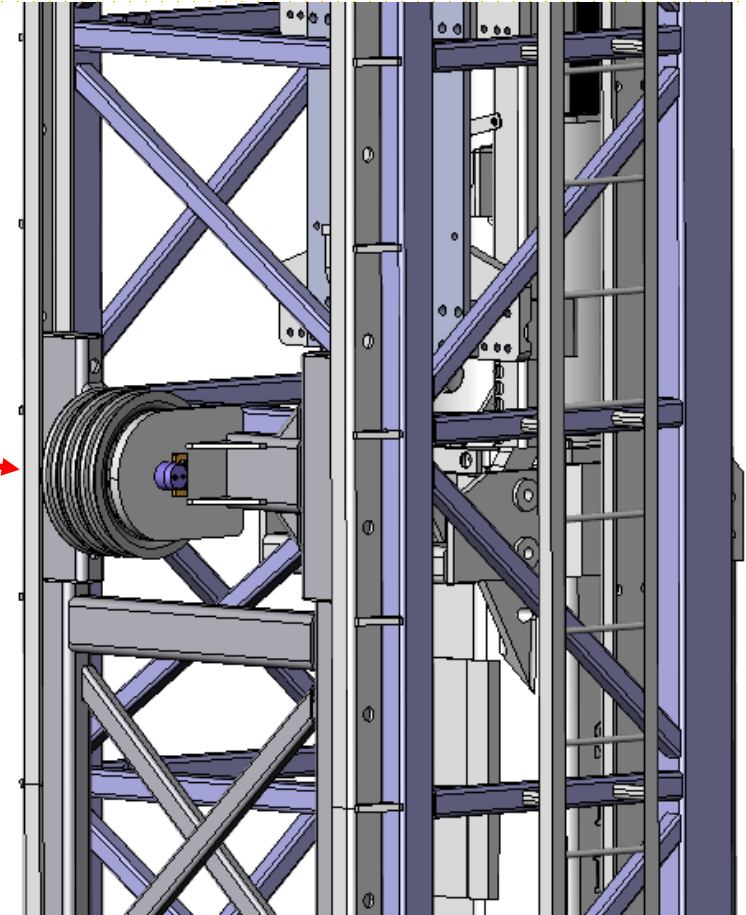
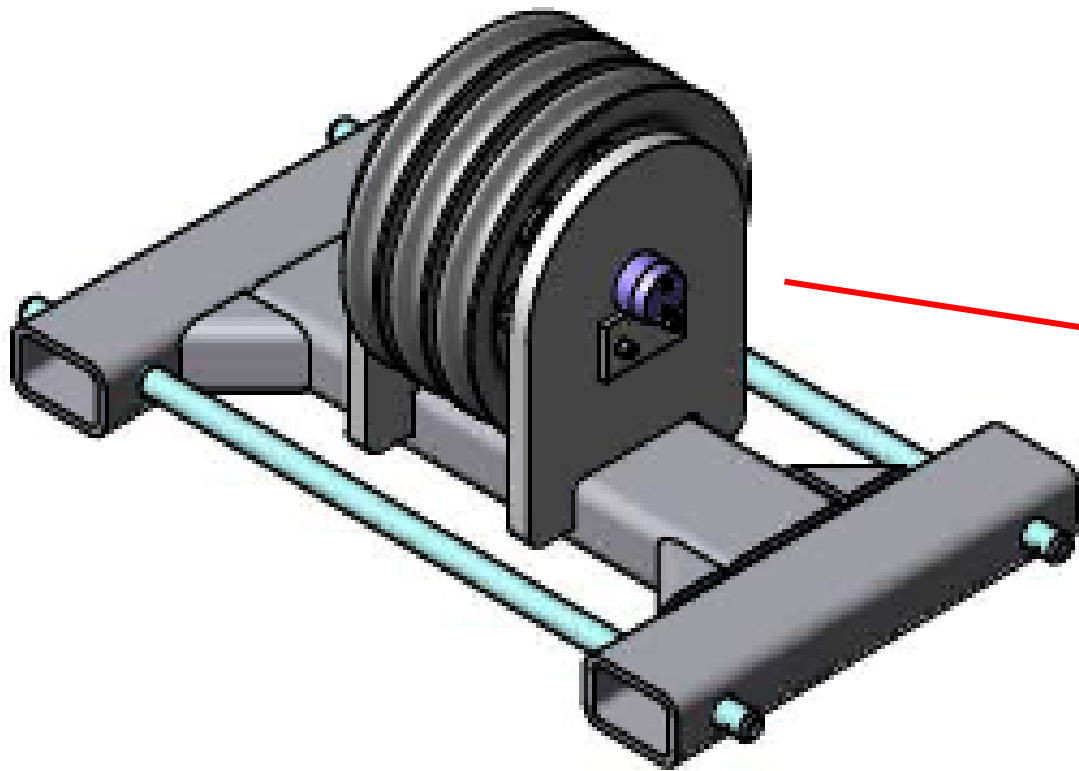
APE 6 Sheave Headblock



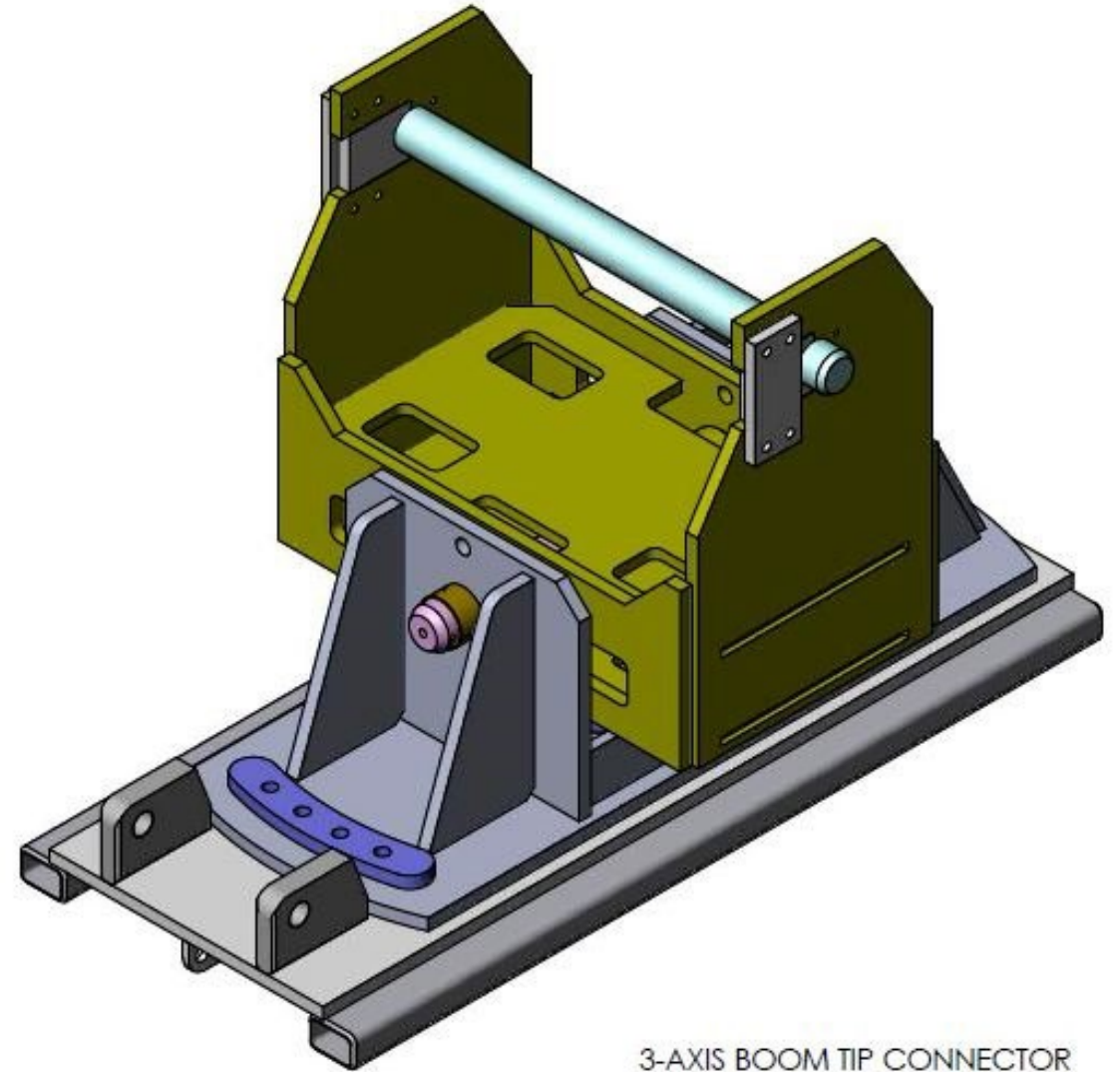


**All components for the APE
VTL Leaders are pin together
for quick and easy
installation and dis-assembly.**

APE 3 Line Rooster Sheave Assembly with Leader Pins

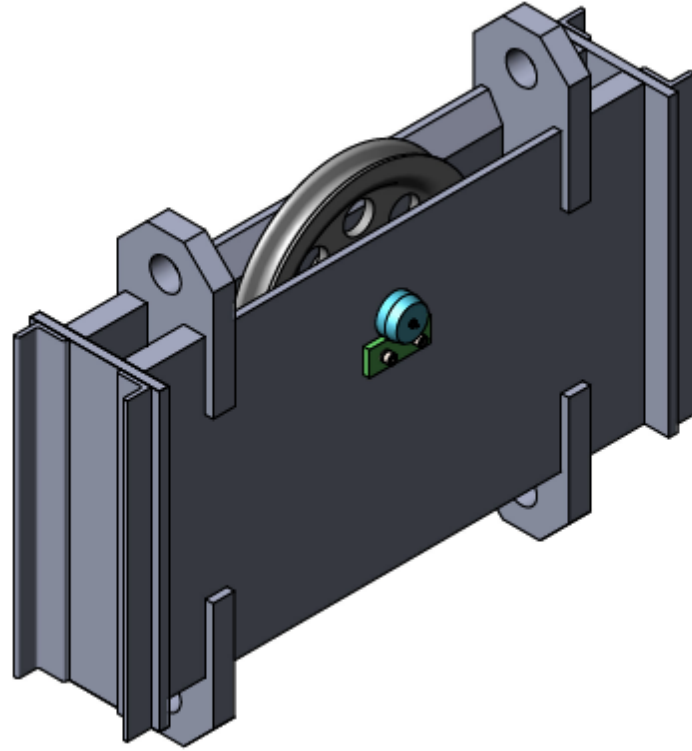


**APE Walk in Style
3-Axis or 2-Axis Boom
Point Connector with
Leader Sled. Includes
New Boom Point Pin.
This Boom Point pin is
longer than the OE pin
and is a one-time install
on the Boom Tip.**

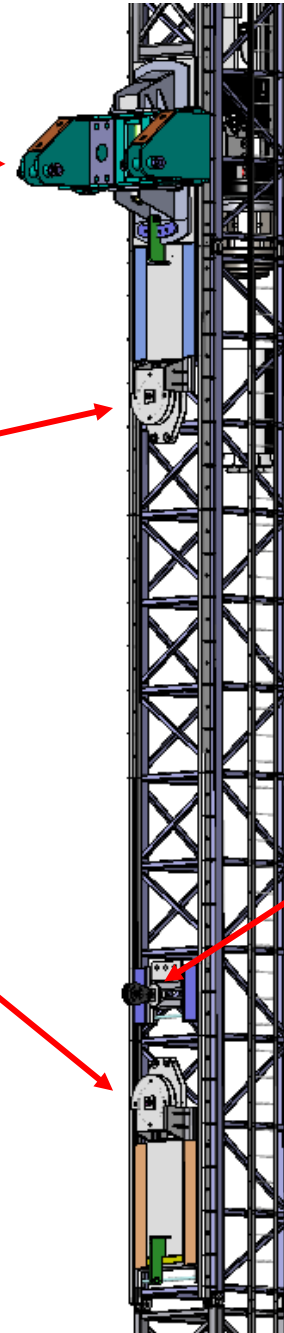


3-AXIS BOOM TIP CONNECTOR

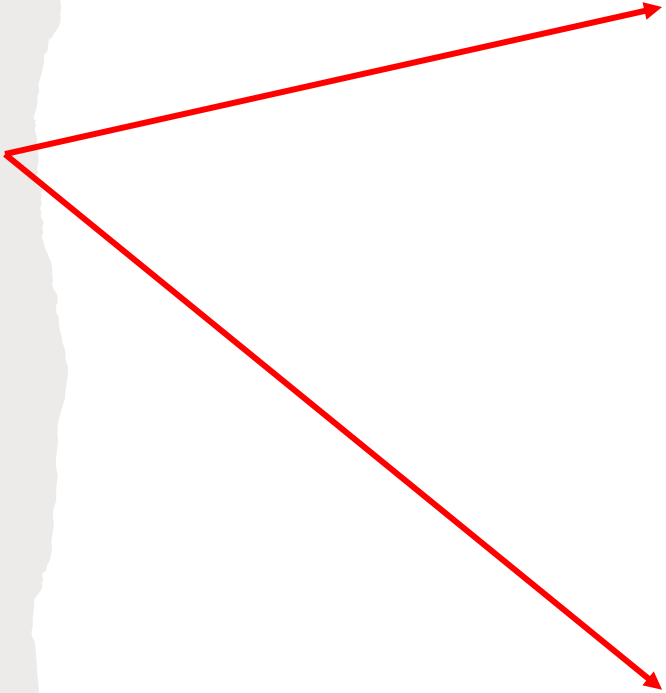
2-Part Hammer Lifting Sled



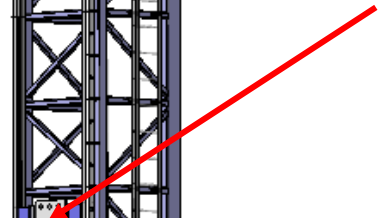
3-Axis VTL Boom Point Connector

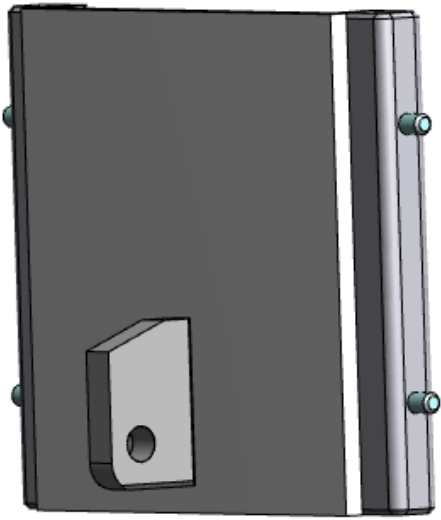


APE VT Leaders use the crane lines through the sheave sleds to achieve the vertical travel.



In addition, there is a line leader that keeps the wire rope in line with the first sheave.



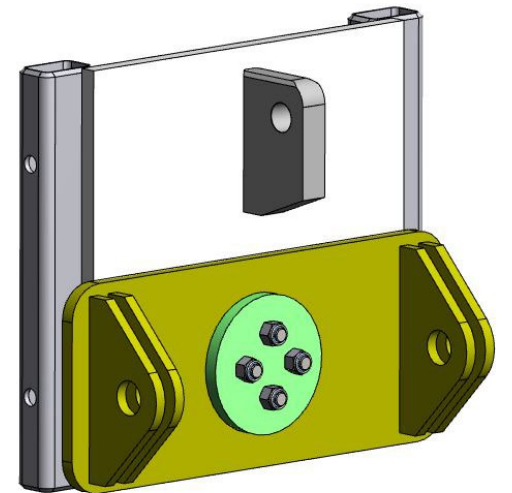


**Spotter Top
Fixed Sled
w/ Lead Pins**



**Spotter VT
Cylinder**

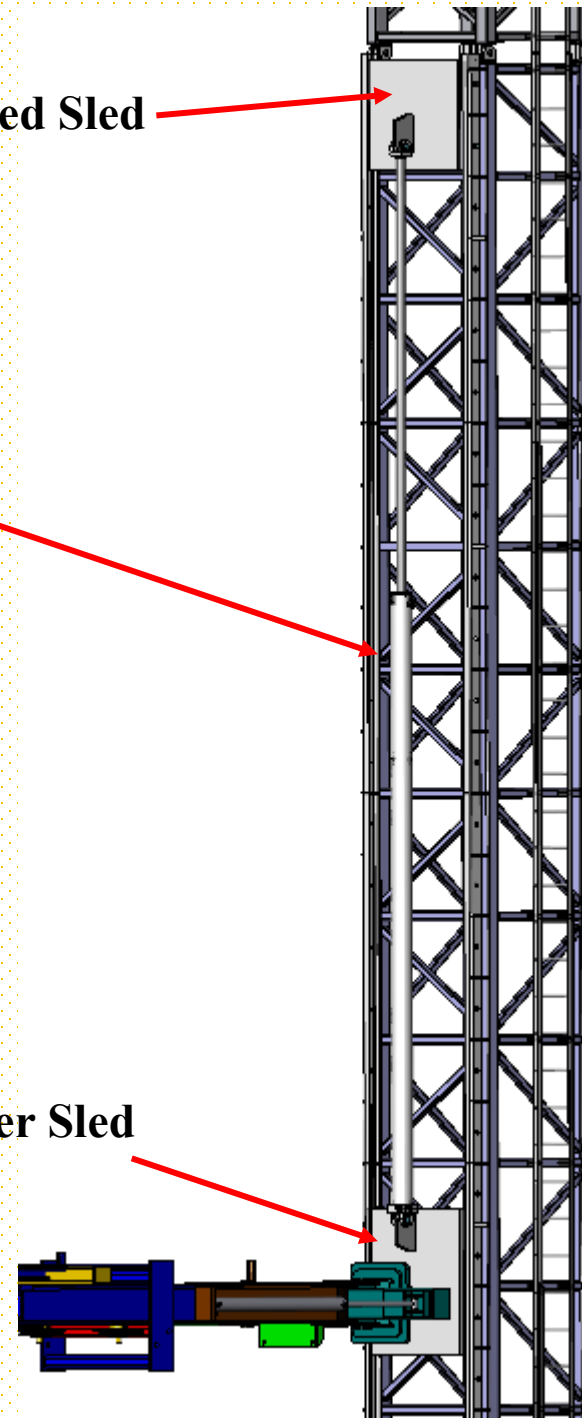
**Spotter to Lead 2 Axis
Connector w/ Lead Sled**



The Vertical Travel Spotter Cylinder allows for spotter travel adjustment when raising and lowering the leader system.

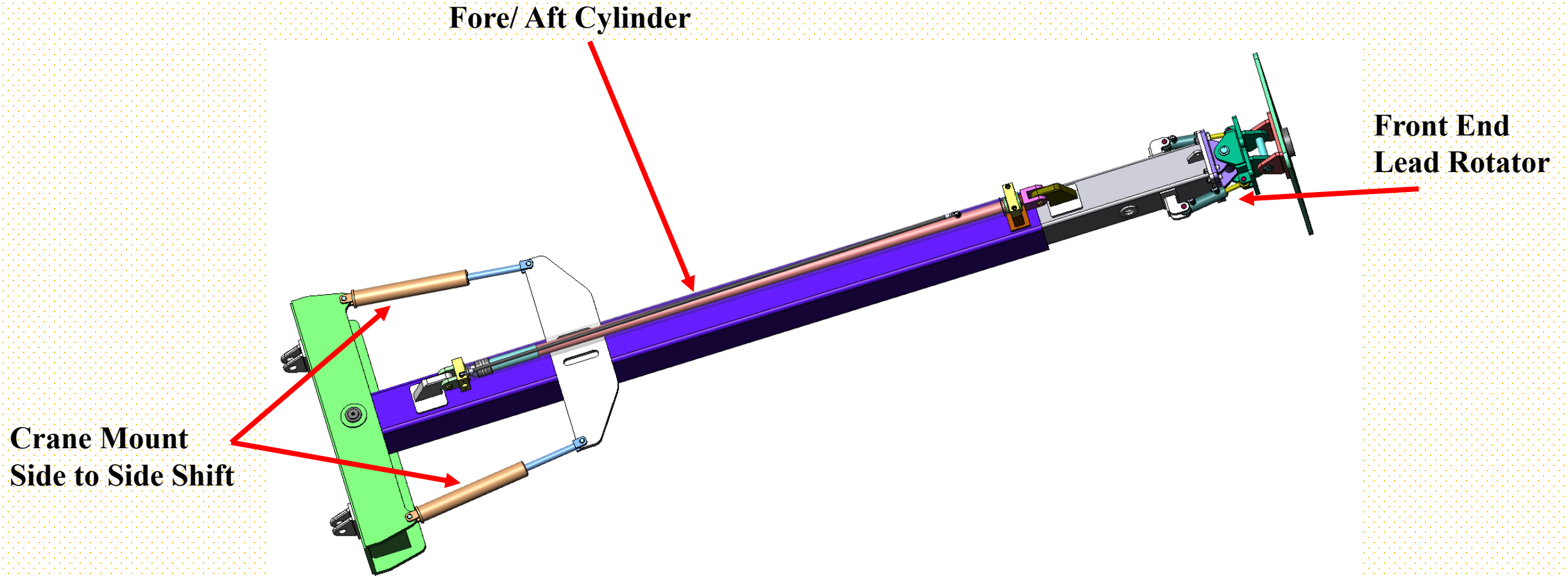
Spotter Top Fixed Sled

Spotter Sled



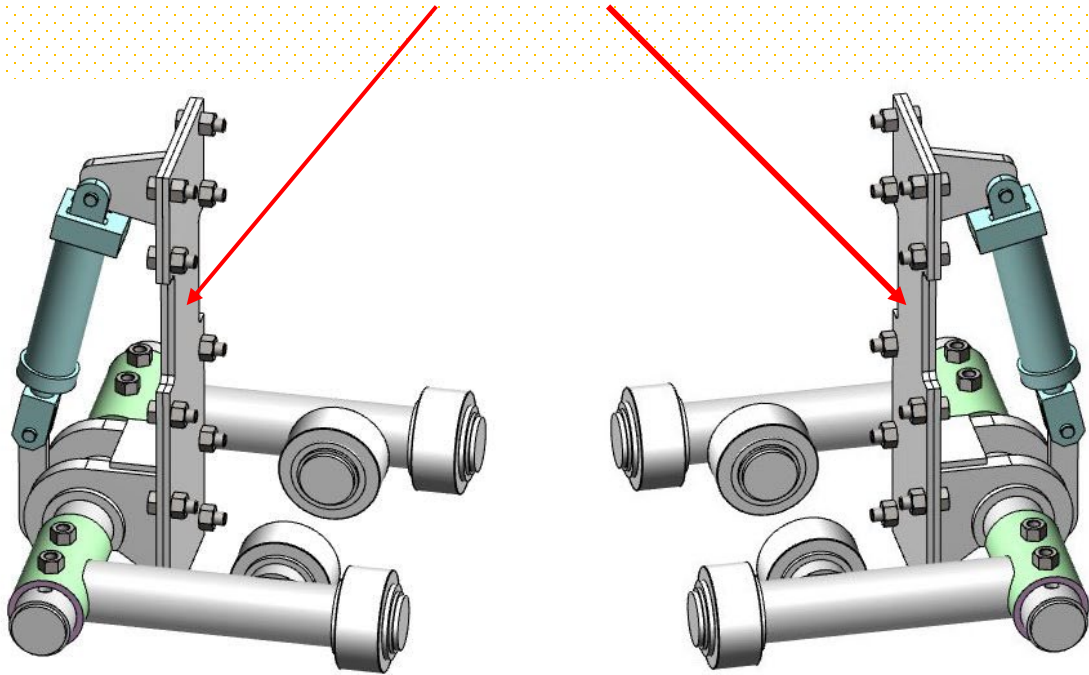
Example: APE 75 Spotter

(APE has several model Spotters to fit the leader configuration)

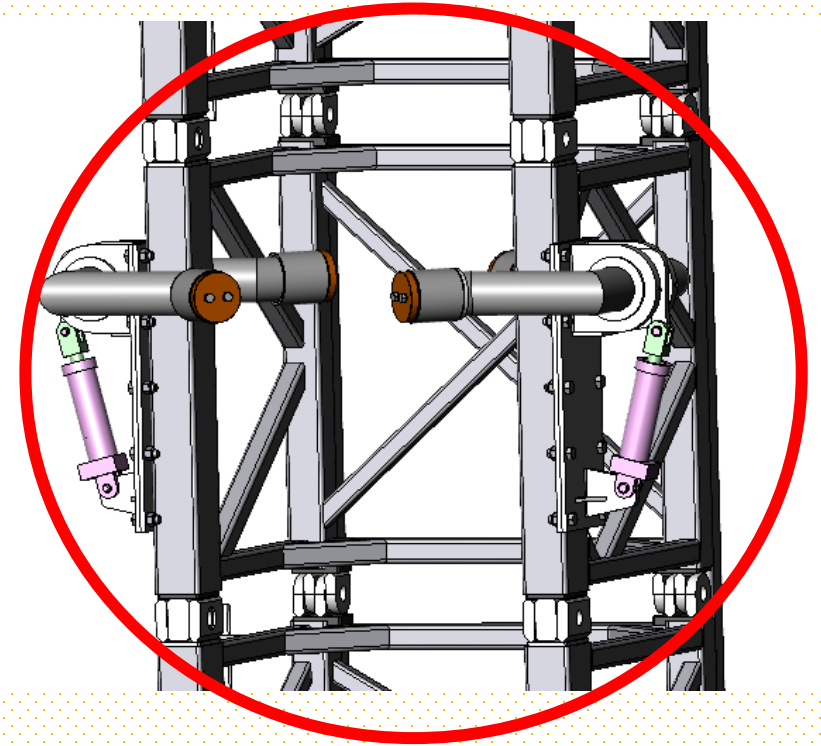


Pile Gates w/ Roller Assemblies

These plates weld to the Lead Rails



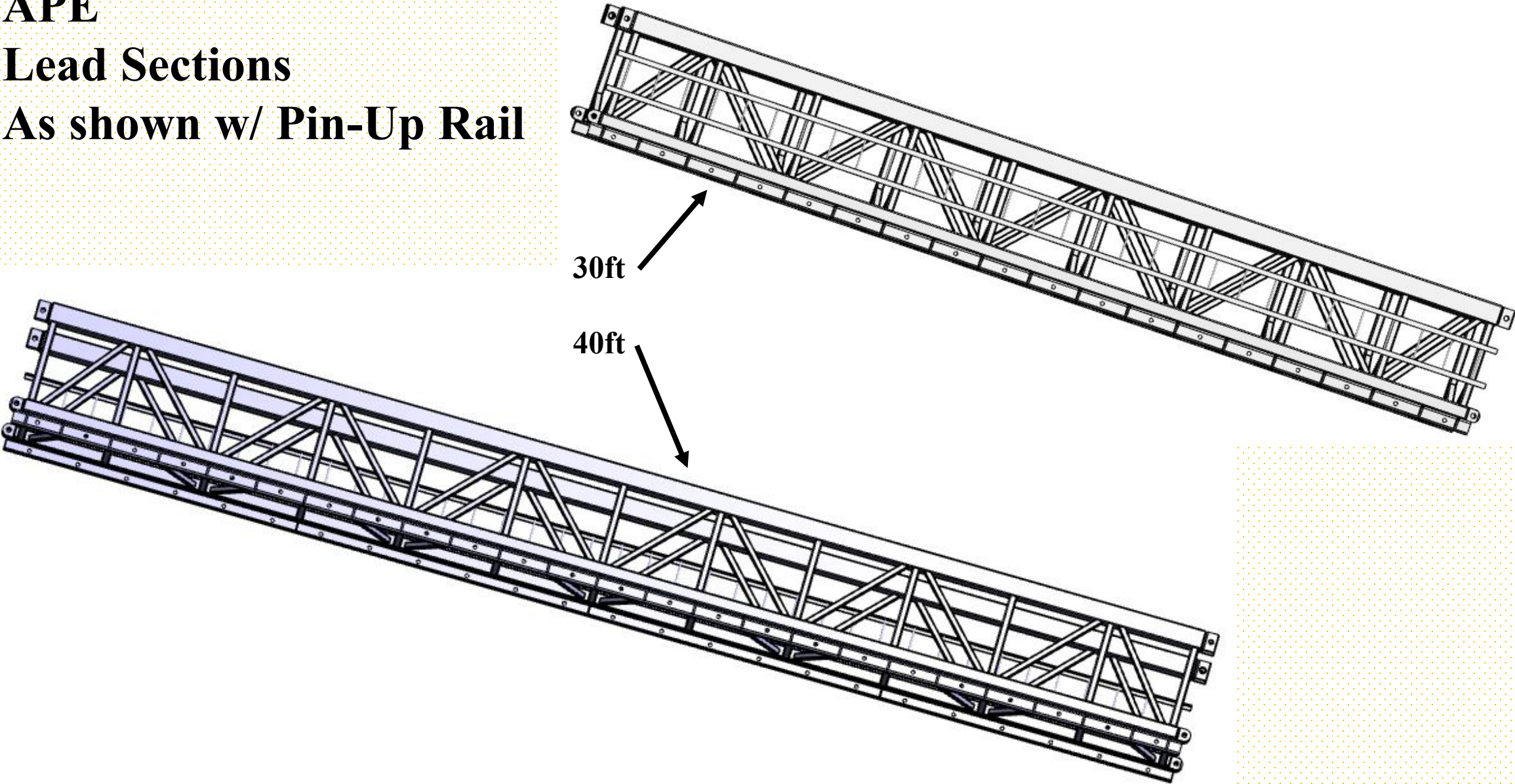
APE also manufactures 5' pile gate leader sections that pin in place with the pile gates installed.



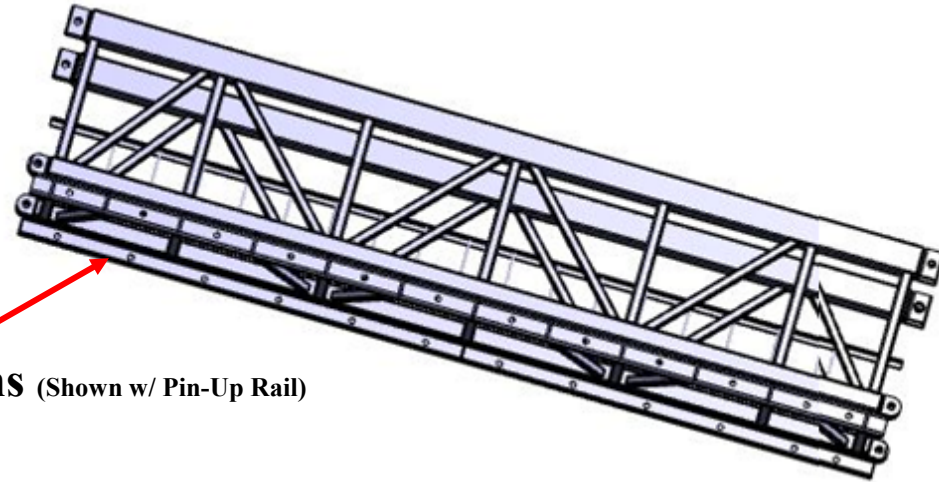
APE

Lead Sections

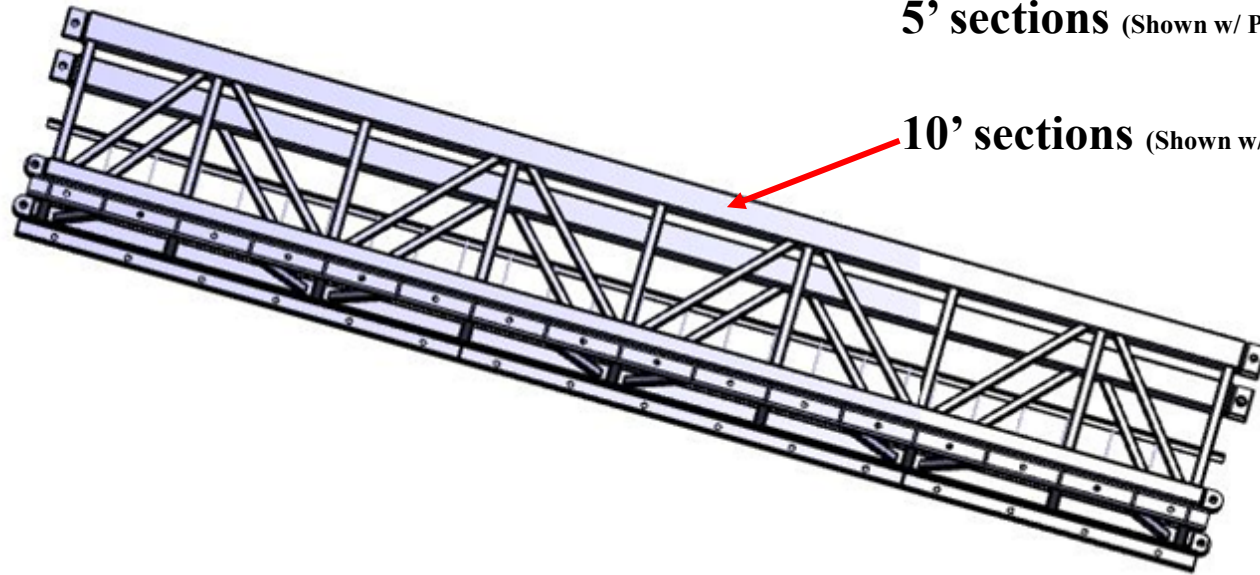
As shown w/ Pin-Up Rail



**APE manufactures
Leader sections in all
lengths and sizes to meet
the needs of the project.**



5' sections (Shown w/ Pin-Up Rail)



10' sections (Shown w/ Pin-Up Rail)

APE has always had the sense of urgency to meet the needs of the projects that we are a part of, especially when there are difficulties on the job that require special attention.

In an attempt to minimize these situations APE will give, free of charge to your piledriving crews on site, a Diesel Hammer Class to instruct operating personnel on proper operating and maintenance procedures.

Our trained service technicians will stay on site for the assembly and start up of the equipment until your crews are confident with the operations.

In addition, APE will supply, with each hammer, a consignment spare parts toolbox with on site emergency parts to minimize downtime when a situation does occur.

As always, our phones are readily available, and we make it a priority to have a service tech on site within hours if an emergency arises.

All NEW APE Diesel Hammers come with a 5-Year Warranty

American Piledriving Equipment, Inc. (APE) warrants new products sold by it to be free from defects in material or workmanship for a period of five years after the date of delivery to the first user and subject to the following conditions:

APE's obligation and liability under this WARRANTY is expressly limited to repairing or replacing at APE's option, any parts which appear to APE upon inspection to have been defective in material or workmanship. Such parts shall be provided at no cost to the user, at the business establishment of APE or the authorized APE distributor of the product during regular working hours. This WARRANTY, shall not apply to component parts or accessories of products not manufactured by APE and which carry the warranty of the manufacturer thereof, or to normal maintenance or normal maintenance parts. Replacement or repair parts installed in the product covered by this WARRANTY are warranted only for the remainder of the warranty as if such parts were original components of said product. AMERICAN PILEDIVING EQUIPMENT, INC. makes no other warranty, expressed or implied and makes no warranty of merchantability of fitness for any particular purpose. APE's obligation under this WARRANTY shall not include any transportation charges, costs of installation, duty, taxes or any other charges whatsoever, or any liability for direct, indirect, incidental or consequential damage or delay. If requested by APE, products or parts for which a warranty claim is made are to be returned transportation prepaid to APE. Any improper use, including operation after discovery of defective or worn parts, operation beyond rated capacity, substitution of any parts whatsoever, or parts not approved by APE or any alteration or repair by others in such manner as in APE's judgment affects the product materially and adversely, shall void this warranty.

ANY TYPE OF WELDING ON EQUIPMENT WILL VOID THE WARRANTY.

Diesels: Do not exceed 120 blows per foot.

Refusal: Diesels: Do not exceed 10 blows per inch or 120 blows per foot. In cases of setting of the pile it is permitted to increase the blow count to 250 blows per foot, but only for one foot of driving penetration. Pile inspectors should consult the APE factory for permission to exceed these limits. Failure to do so will void the warranty. This standard specification is accepted by the DFI (Deep Foundations Institute) and the PDCA (Pile Contractors Association) and by all manufacturers of pile driving equipment.

**Thank you for considering APE as your
Foundation Equipment Supplier.**

